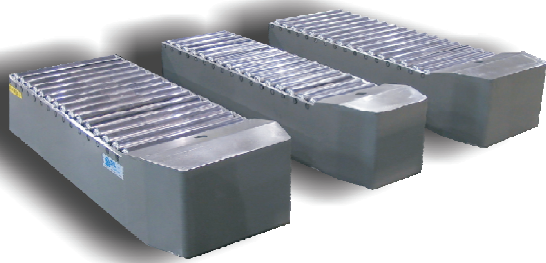
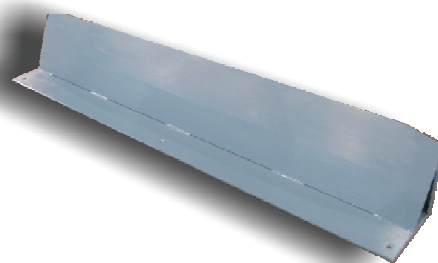


## FORK TRUCK INTERFACE EQUIPMENT



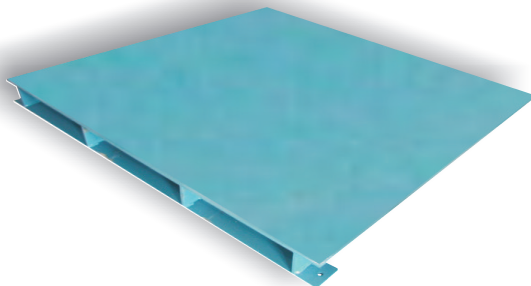
### FORK TRUCK STATION

Systec's Fork Truck Station is used in various locations with the conveyor system to pick-up or drop-off loads. The finger widths, spacing, and type of finger is customizable to fit virtually any application.



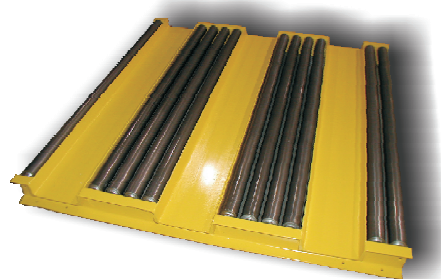
### FORK TRUCK GUARD

Systec's Fork Truck Guard is set along the conveyor's end or side. The guard allows lift trucks to access loads from the conveyor, while protecting the conveyor from inadvertent damage..



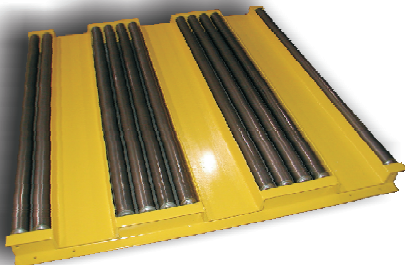
### FORK TRUCK RAMP

Systec's Fork Truck Station is used in various locations with the conveyor system to pick-up or drop-off loads. The finger widths, spacing, and type of finger is customizable to fit virtually any application.



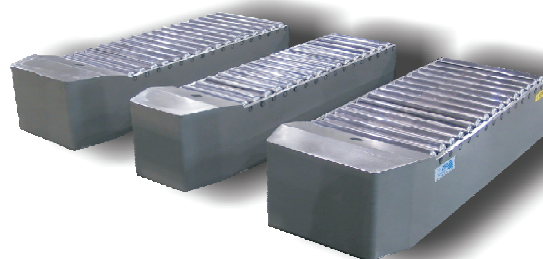
### 3-WAY FORK TRUCK STATION

Systec's Fork Truck Station is used in various locations with the conveyor system to pick-up or drop-off loads. The finger widths, spacing, and type of finger is customizable to fit virtually any application.



### FORK TRUCK STATION

Systec's Fork Truck Station is used in various locations with the conveyor system to pick-up or drop-off loads. The finger widths, spacing, and type of finger is customizable to fit virtually any application.



### FORK TRUCK STATION

Systec's Fork Truck Station is used in various locations with the conveyor system to pick-up or drop-off loads. The finger widths, spacing, and type of finger is customizable to fit virtually any application.

# FORK TRUCK INTERFACE EQUIPMENT

## SPECIFICATIONS

Fits Between Frame Dimension	60", 72", 84", 96"
Device Lengths	5'-0" thru 8'-0" on 1'-0" increments
Top-of-Roller Height	12" T.O.R. Standard (heights over 12" available)
Drive Capacity	3,500lb/unit
Conveyor Speeds	30, 40, and 60FPM
Motor	Flange Mounted, 3/4HP, 230/460volt, 3-Phase, 60 Hertz, Standard
Air Requirement	80PSI

## CONSTRUCTION

Belt Bar	Laser cut and welded steel construction
Belt Bar Mounting	Telespar Tube, 1" Adjustability (3" for roller centers)
Belt Guide	Rivet Mounted UHMW Plastic Chain Rail
Belt	2 1/2" Wide, Plastic Link Chain
Idler Sprocket	15 Tooth, Nylon, Plain Bore
Shaft	1" Diameter Common Drive Shaft
Bearing	1" Diameter, Sealed-for-Life, Flange Mount

## CONTROL OPTIONS

Manual	Pushbutton Operation
Automatic	Positioning Controls with Electro-mechanical Sensor Actuation
Safety Controls	Automatic Collision Safety
Priority Entry	Automatic Load Entry from Perpendicular Conveyor

*The Leader in Conveyor Innovation!*

10010 Conveyor Drive - Indianapolis, IN 46235  
Tel: 317-890-9230 / 800-578-1755 Fax: 317-890-9232  
www.systecconveyors.com

