



OVERALL CONSTRUCTION

Systec's PLD features all-welded steel frame construction with precision laser cut parts. This is a self-contained unit, including all pneumatic and hydraulic components.



HYDRAULICS

Systec's PLD adjustments are factory preset. The final, fine tune adjustments are made at the time of installation based on pallet sizes and cycle rates. No further adjustments are required once the system is up-and-running!

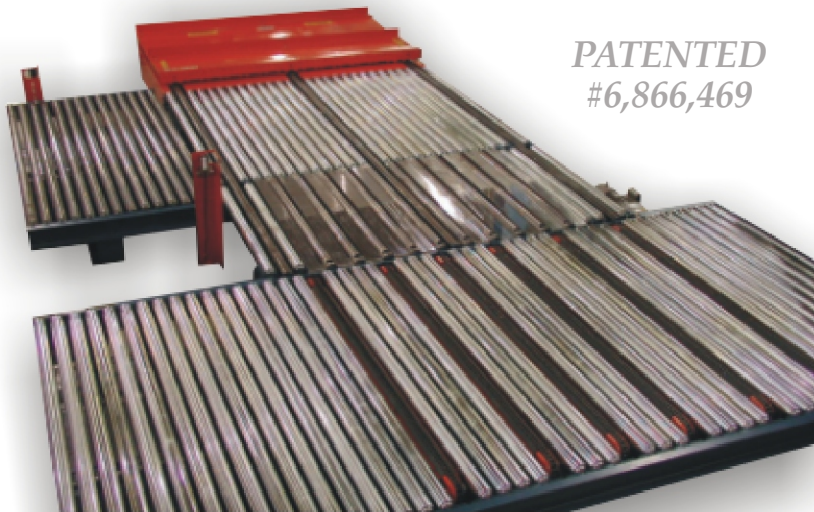


DRIVE ASSEMBLY

Systec's PLD drive assemblies operate the self-contained conveyor section, and the pusher head. Other components are drive by the 10HP hydraulic package.

PALLET LOADING DEVICE

PATENTED
#6,866,469



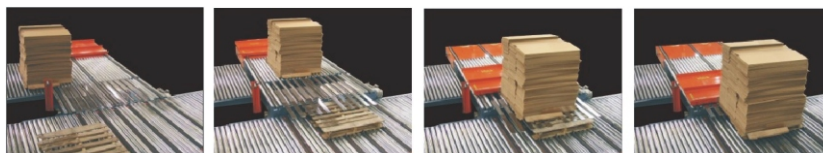
DESCRIPTION

Systec's patented Pallet Loading Device (PLD) is an exceptional machine for automating the process of placing a load on a pallet. All components of the PLD system, the load, as well as the pallet, can be automated to center the load on the pallet by both the width and length of the load. Once the load is centered on the pallet, the pallet is then centered back onto the take-away conveyor destined for the next operation typically a banding, or strapping operation.

Systec's PLD is a high-speed palletizing operation. From the point of load and pallet entering the system, to the point of discharge from the system, the PLD is able to load up to 90 units per hour. This is a "pit-less" system and requires a minimal amount of floor space.

Systec's PLD is a very reliable and durable system. The PLD system is comprised of the pallet loader itself, which includes a self-contained conveyor.

The PLD system and it's components, like all fine Systec Conveyor products, is an all-welded, steel frame construction, using precision laser cut parts for exact fit and function. This is a very low maintenance device applying the most advanced safety designs and features.



PALLET LOADING DEVICE (PLD)

SPECIFICATIONS

Between Frame Dimension	72", 84", 96"
Lengths (head size)	7'-0", 8'-0", 9'-0"
Top-of-Roller Height	12" T.O.R. to 18" T.O.R., Adjustable
Drive Capacity	3,500lb/unit
Conveyor Speeds	45 FPM
Cycle Rating	90 Load Per Hour
Air Requirement	80 PSI
Hydraulic Package	10 GPM Variable Volume Pump 30 Gallon Reservoir 10 HP Motor

CONSTRUCTION

Frame	All-Welded Steel Construction
Pusher Head	Heavy Gauge Steel With Six Trolley Assemblies
Fork Extensions	1" X 3" Tapered, Hardened Steel

SAFETY FEATURES

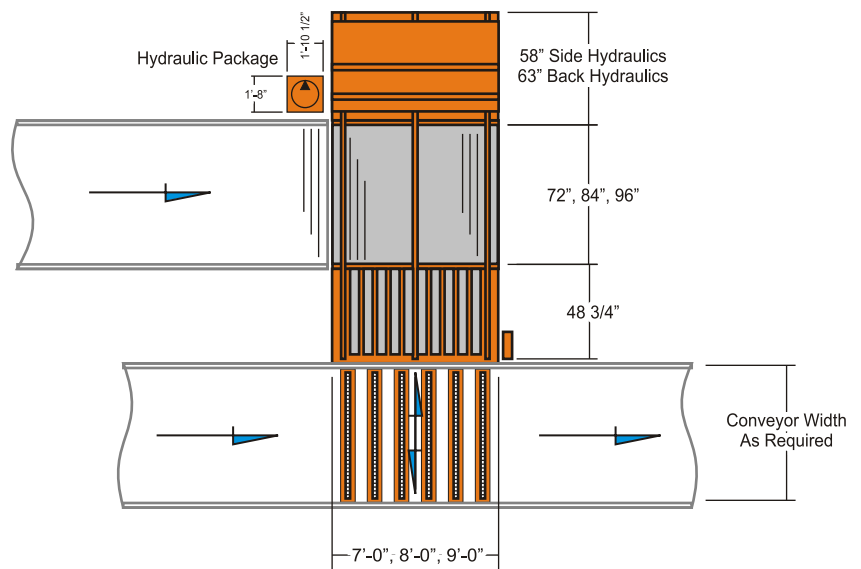
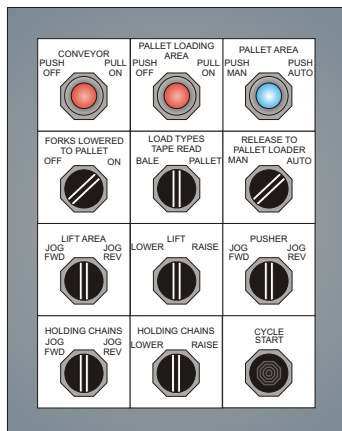
Frame	Guarding On All Moving Parts, With Toe-Guard Feature Surrounding All Exposed Areas Of Lifting Device
-------	--

CONTROL OPTIONS

Automatic	Positioning Controls with Electro-mechanical Sensor Actuation
Manual	Pushbutton Operation

PALLET SIZES

Width	48" *Note - Pallets wider than 48" will not have full coverage of forks
Length	Dependent on load and head size
Height	5.5"
Maximum Height of Product	60"



The Leader in Conveyor Innovation!

10010 Conveyor Drive - Indianapolis, IN 46235
Tel: 317-890-9230 / 800-578-1755 Fax: 317-890-9232
www.systecconveyors.com

