



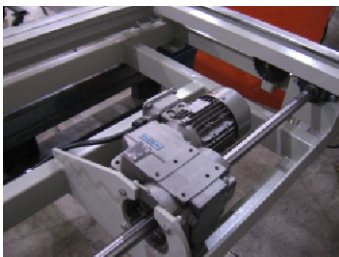
OVERALL CONSTRUCTION

Systec's LCD features all-welded steel frame construction. All moving parts are guarded and labeled to warn personnel of potential dangers that exist with any moving machinery.



ADJUSTABILITY

Systec's LCD heads are easily adjustable with cable and chain tension adjustments. The folding head are also easily adjusted for up and down position, as well as tilt.



DRIVE ASSEMBLY

Systec's LCD variable frequency drive senses the pressure applied and when the load is detected to be centered, it then reverses the heads to the home position.

LOAD CENTERING DEVICE



DESCRIPTION

Systec's Load Centering Device (LCD) is a very effective method for automatic load centering.

The feature of Systec's LCD is the fold-up heads or the optional fixed heads for pallet centering or squaring. As the load stops, centered in the conveyor line, the heads advance toward the load. The scalloped head, and specific bends, scoop underneath the bottom dunnage sheets. As the load is pushed to center, the heads then fold-up, bending the bottom dunnage for the load banding. An adjustable variable frequency drive senses the pressure applied and when the load is sensed to be centered, it then reverses the heads to the home position.

The LCD is offered in many widths to accommodate various load sizes. It can be set in Powered Accumulating Roller conveyor (PAR), Powered Roller Only conveyor (PRO), or Gravity Roller Conveyor (GRC).

As with all Systec conveyor and devices, the LCD is all welded steel construction, using precision laser cut parts for exact fit and function. This is a very low maintenance device applying the most advanced safety designs and features.

LOAD CENTERING DEVICE (LCD)

LOAD CENTERING DEVICE (LCD)

SPECIFICATIONS

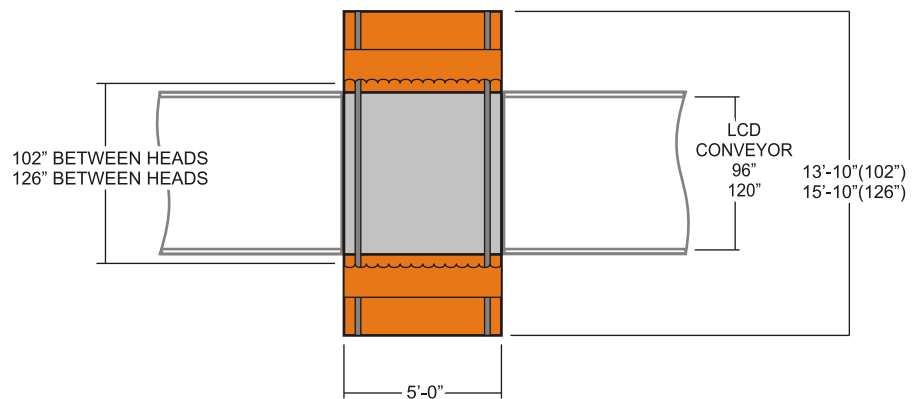
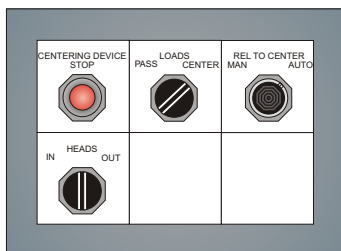
Between Frame Dimension	96", 120" (96" with dual 12" gravity sections)
Device Lengths	5'-0"
Top-of-Roller Height	12" T.O.R. Standard (heights over 12" available)
Drive Capacity	3,500lb/unit
Conveyor Speeds	30, 40, and 60 FPM
Motor/Drive Package	Flange Mounted Gearbox, 1HP Motor, 230/460 Volt, 3-Phase, 60 Hertz, Standard

CONSTRUCTION

Frame	All-welded steel construction
Fold-up Head	Laser cut and precision bent with under-load scallops
Head Rail	2" solid t-rail
Head Trolley	Dual 2 1/2" diameter wheels with 1/2" cam followers
Drive Chain	#50 Heavy Duty Chain
Tension Cable	13 strand woven cable with swedge fit threaded ends
Sprocket	1" Diameter drive shaft
Sheave	6 1/8" Diameter x 1" Hardened Steel
Drive Shaft	1 3/8" Diameter

CONTROL OPTIONS

Automatic	Positioning Controls with Electro-mechanical Sensor Actuation
Manual	Pushbutton Operation



The Leader in Conveyor Innovation!

10010 Conveyor Drive - Indianapolis, IN 46235
 Tel: 317-890-9230 / 800-578-1755 Fax: 317-890-9232
 www.systecconveyors.com

