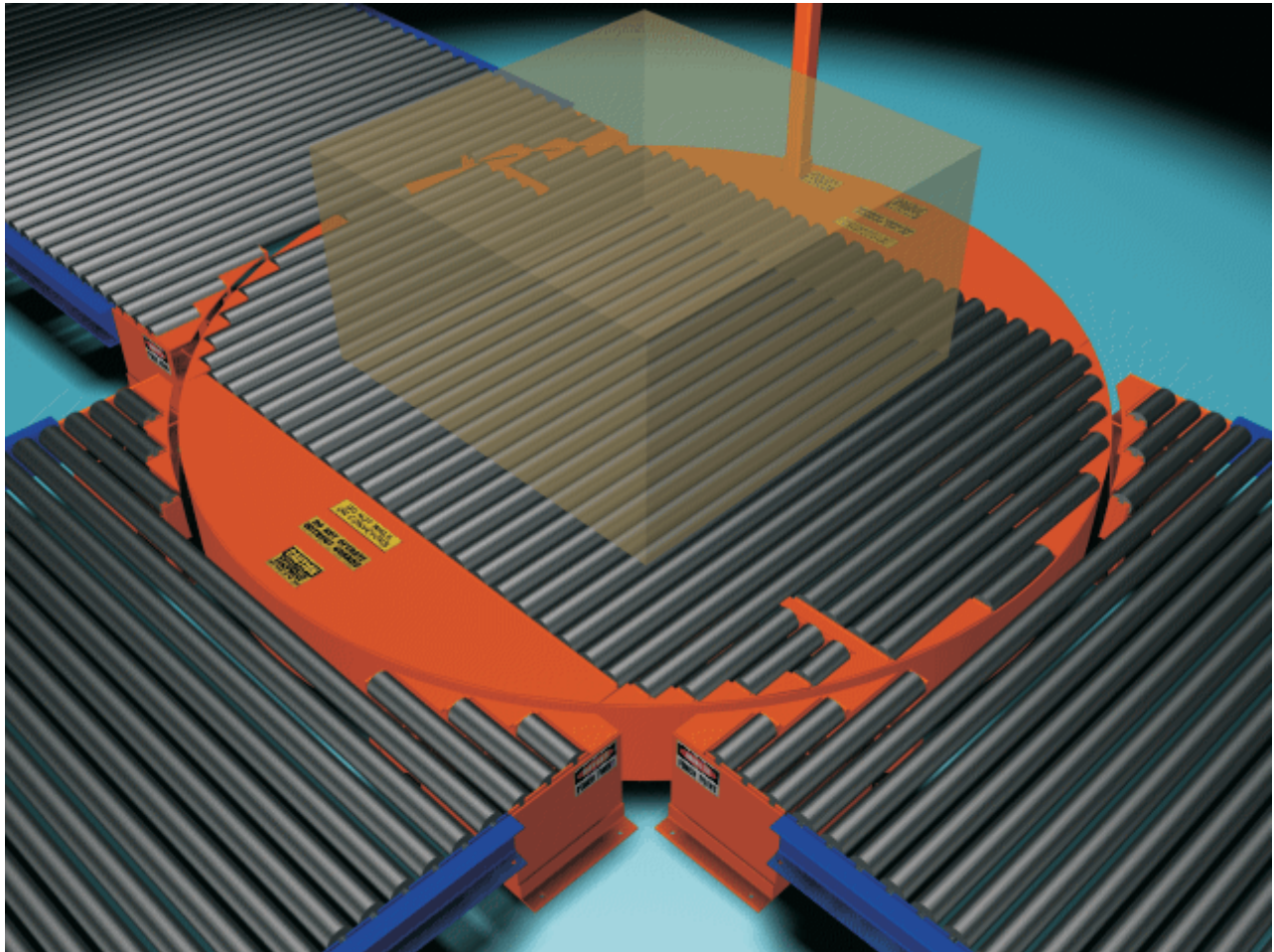


# **CENTER PIVOTING CONVEYOR**



# **SERVICE AND MAINTENANCE MANUAL**



---

## TABLE OF CONTENTS

<b>DESCRIPTION</b>	<b>PAGE NO.</b>
Center Pivot Conveyor	2
Conveyor Safety	3
CPC Service and Parts	5
Parts Information	7
Maintenance Schedule	9

<b>LIST OF ILLUSTRATIONS</b>	<b>PAGE NO.</b>
A Center Pivot Conveyor	2
B Safety Label Locations	3
C Lockout Switch for Safety	4

<b>LIST OF ASSEMBLY DRAWINGS</b>	<b>PAGE NO.</b>
1 CPC Load Carrying Rollers	5
2 Rotation Drive Assembly	6
3 Idler Wheel Assembly	6
4 Pivot Post and Bearing Assembly	6

When ordering parts, please call, fax or e-mail Systec at the address and/or the numbers shown below.

**SYSTEC** Conveyors Parts Department  
10010 Conveyor Drive  
Indianapolis, IN 46236

Tel 317.890.9230  
1.800.578.1755  
Fax 317.890.9232

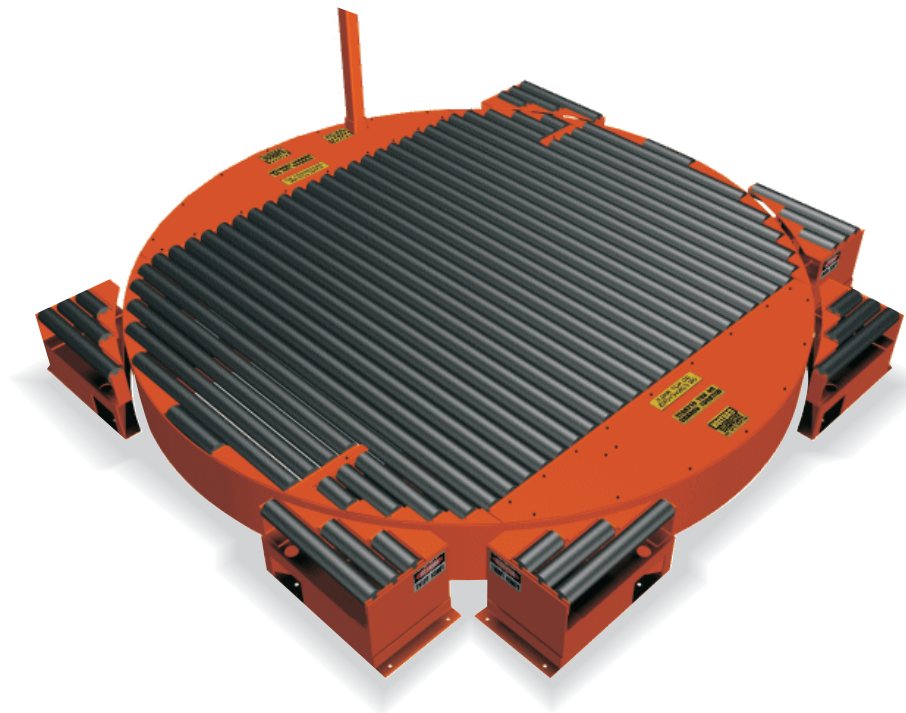
On The Net @ <http://www.systecconveyors.com/>  
e-mail: [info@systecconveyors.com](mailto:info@systecconveyors.com)

## CENTER PIVOT CONVEYOR

The information within this manual covers **SYSTEC's** standard Center Pivot Conveyor. Within this manual the device will be referred to as an CPC.

The CPC can be used between any conveyor lines. It can be applied for a three or four way intersection of conveyor lines. The CPC is a bi-directional device, both in rotation and in load movement off and on the conveyor line.

The primary advantage of using the CPC is to maintain load orientation. In using a pivoting conveyor loads are able to make 90° turns without changing the load orientation. This can be extremely useful when load orientation is must be maintained for board being sent to converting machines, or finished unit loads to strapping operations.



**CENTER PIVOT  
CONVEYOR**

*ILLUSTRATION A*

## CONVEYOR SAFETY

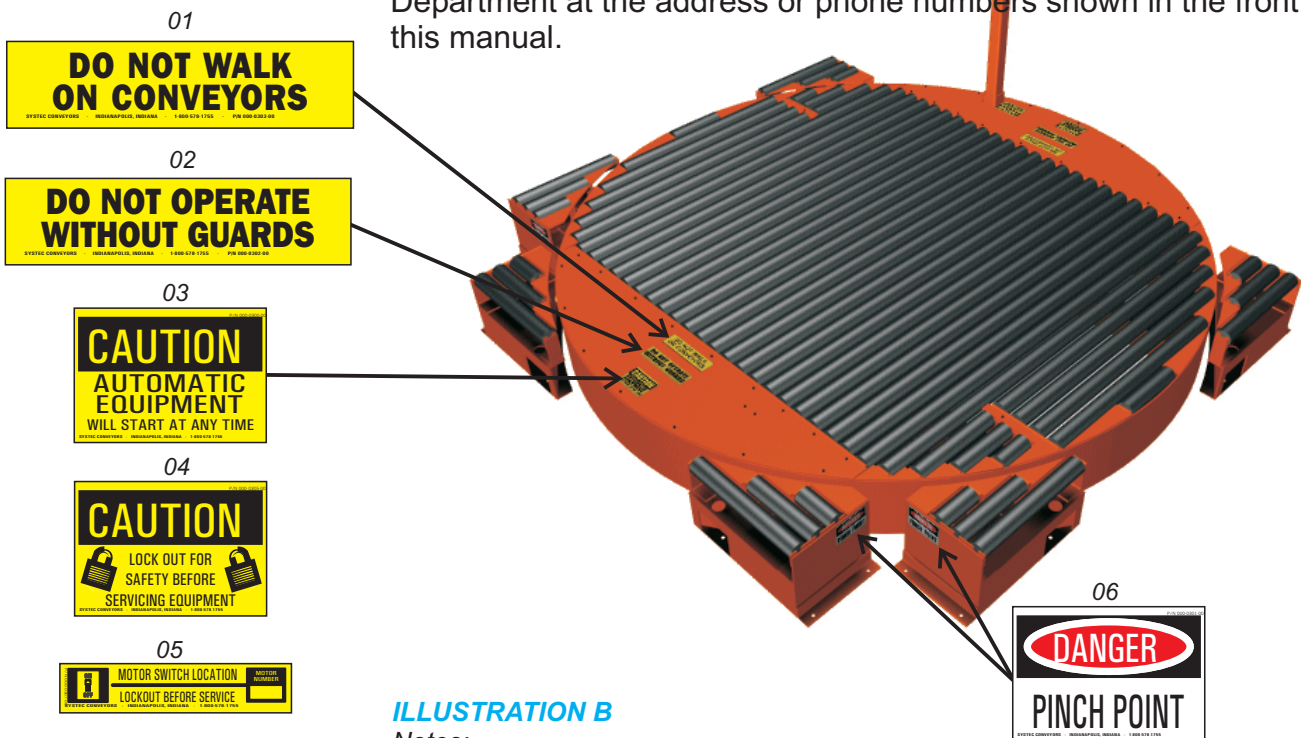
Where safety is concerned, conveyor and its devices are no different from any machinery or processing equipment. In many cases, the conveyor and devices can start running without notice.

**SYSTEC** designs all its equipment to be as safe as possible by installing guarding, or providing safety labels on all conveyor and devices. These labels are in place to warn personnel working on or around the conveyor system of the inherent dangers that exist with any conveyor or machinery.

**SYSTEC** Conveyors also believes that a conveyor safety session should be incorporated into your existing safety training program to educate all personnel that work on or around conveyor systems of these potential safety concerns.

Below is Illustration B, showing the safety labels provided with **SYSTEC's** CPC. These labels should be installed to alert personnel of the potential hazards caused by improper use of the conveyor equipment. Where foot traffic exists, personnel should be discouraged from walking on a conveyor line.

Should you need additional labels, please contact **SYSTEC's** Parts Department at the address or phone numbers shown in the front of this manual.



**ILLUSTRATION B**

Notes:

*Exact location of Motor Switch labels are determined by the mounting location at the time of installation.*

## CONVEYOR SAFETY (continued)

Lockout is a very important part of your Maintenance and Service Department procedures. **SYSTEC** provides a Lockout Switch, as shown in illustration C, for each drive motor.

### LOCKOUT SWITCH FOR SAFETY



*ILLUSTRATION C*

Note: Only authorized personnel should perform service and maintenance on any conveyor equipment and controls.

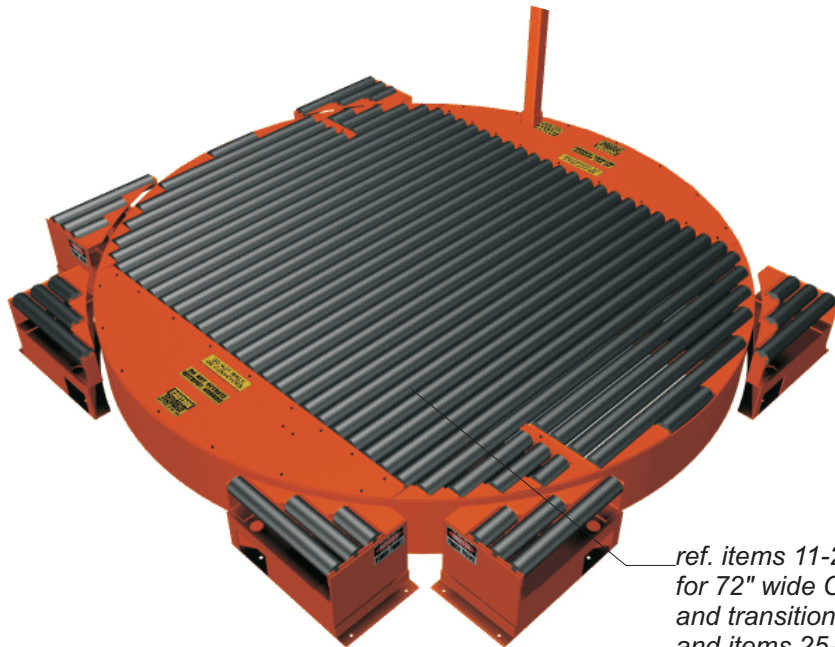
## CPC SERVICE AND PARTS

The drawings within this section are designed to help you understand how components of the CPC are assembled and disassembled. The exploded views also allow you to quickly and easily identify the parts that may need to be serviced and/or repaired.

The parts identification page(s) provide the corresponding part numbers to the drawings, and indicates recommended quantities you should stock for each CPC, along with the parts descriptions, part numbers, and order quantities. This is a faxable form, for your convenience, to order parts for stock or needed replacement parts. Simply fill in the order quantity, the necessary purchase order number and shipping information, then fax the form to **SYSTEC** Conveyor's at the number shown on the form. An Order Acknowledgement will be faxed back with the estimated ship date and pricing information.

The drawing below shows the CPC and the load carrying rollers, which may not match the infeeding and outfeeding conveyor sections. Be sure, when ordering, to specify the exact size of rollers needed and identify for **SYSTEC's** Parts Department the device type for which the rollers are needed.

### CPC LOAD CARRYING ROLLERS



ref. items 11-24  
for 72" wide CPC  
and transition rollers  
and items 25-41  
for 84" wide CPC  
and transition rollers

#### ASSEMBLY DRAWING 1

Notes:

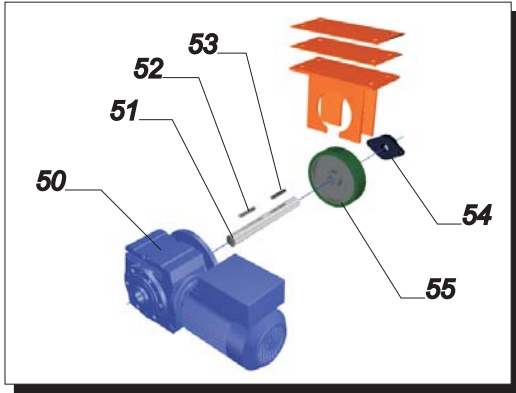
Lockout switch location is determined at time of installation.

## CPC SERVICE AND PARTS (continued)

### ASSEMBLY DRAWING 2

Notes:

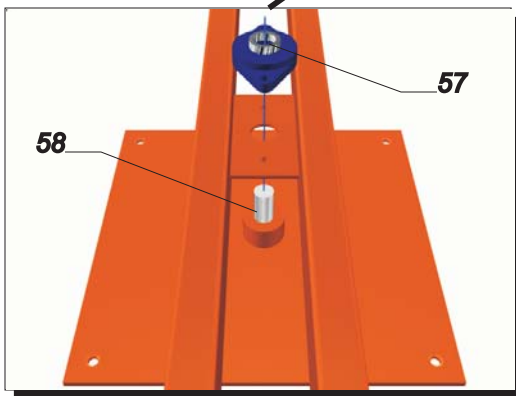
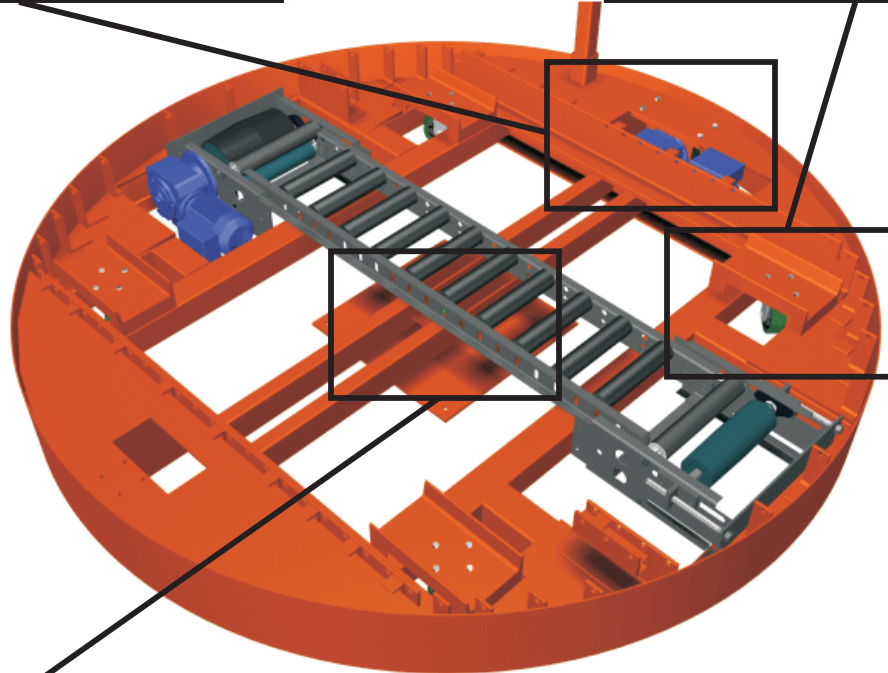
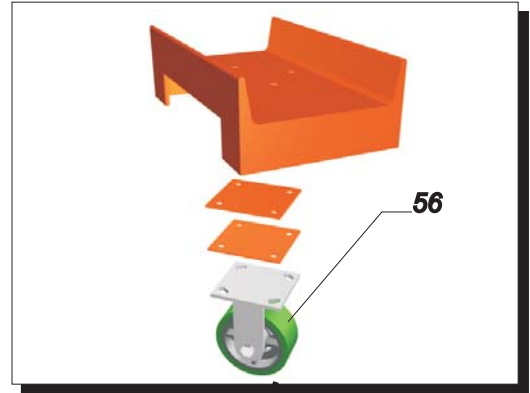
When ordering gearmotors, please provide the S.O. Number information from the motor and gearbox data plates.



### ASSEMBLY DRAWING 3

Notes:

After reassembly, make sure the wheel alignment is correct by cautiously rotating the pivoting conveyor before tightening the bolts. Be sure all safety practices are followed.



### ASSEMBLY DRAWING 3

Notes:

Always check floor anchors and bearing mountings for secure fit and tight bolt mountings.

**NOTE:**

For conveyor drive and takeup component information, refer to the **POWERED ROLLER CONVEYOR SERVICE AND MAINTENANCE MANUAL.**



Some items on this parts list require "fill-in" or additional information to receive the needed part. Please be sure to provide all information requested on this list, or within this manual to assure that you do infact get exact replacement parts. Systec's Parts Department will assist you in obtaining the proper part information, or answering any questions by calling 1-800-578-1755.

Item	Qty.	Rec. Spare	Description	Part Number	Gr.	Order Qty.
1	2	1	Safety Label - Do Not Walk On Conveyor	000-0303	-00	
2	2	1	Safety Label - Do Not Operate Without Guards	000-0302	-00	
3	3	1	Safety Label - Automatic Equipment	000-0300	-00	
4	2	1	Safety Label - Lock Out For Safety	000-0305	-00	
5	2	1	Safety Label - Motorswitch Location	000-0307	-00	
6	6	1	Safety Label - Pinch Point	000-0301	-00	
10	1	2	Lockout Switch	000-0118	-95	
		1	(Following for 72" W Center Pivot)			
11	2		5-1/8" Roller, 2-1/2" Dia., 11/16" HEX, 11ga, S.L.	38D1040	01	
12	2		9-5/8" Roller, 2-1/2" Dia., 11/16" HEX, 11ga, S.L.	38D1040	02	
13	2		10" Roller, 2-1/2" Dia., 11/16" HEX, 11ga, S.L.	38D1040	03	
14	2		13-5/8" Roller, 2-1/2" Dia., 11/16" HEX, 11ga, S.L.	38D1040	04	
15	2		34-1/8" Roller, 2-1/2" Dia., 11/16" HEX, 11ga, S.L.	38D1040	05	
16	2		40-5/8" Roller, 2-1/2" Dia., 11/16" HEX, 11ga, S.L.	38D1040	06	
17	2		45-1/8" Roller, 2-1/2" Dia., 11/16" HEX, 11ga, S.L.	38D1040	07	
18	2		49-1/8" Roller, 2-1/2" Dia., 11/16" HEX, 11ga, S.L.	38D1040	08	
19	2		70" Roller, 2-1/2" Dia., 11/16" HEX, 11ga, S.L.	38D1040	09	
20	22		72" Roller, 2-1/2" Dia., 11/16" HEX, 11ga, S.L.	38D1040	10	
21	6		Center Pivot Conv. (72") Transition Assembly	38C1135	00	
22	6		6" Roller, 2-1/2" Dia., 11/16" HEX, 11ga, L.O.	38C1117	01	
23	6		11-1/2" Roller, 2-1/2" Dia., 11/16" HEX, 11ga, L.O.	38C1117	02	
24	6		19" Roller, 2-1/2" Dia., 11/16" HEX, 11ga, L.O.	38C1117	03	
			(Following for 84" W Center Pivot)			
25	2		5-1/2" Roller, 2-1/2" Dia., 11/16" HEX, 11ga, S.L.	10D0148	01	
26	2		6" Roller, 2-1/2" Dia., 11/16" HEX, 11ga, S.L.	10D0150	01	
27	2		11" Roller, 2-1/2" Dia., 11/16" HEX, 11ga, S.L.	10D0148	02	
28	2		15" Roller, 2-1/2" Dia., 11/16" HEX, 11ga, S.L.	10D0150	04	
29	2		19" Roller, 2-1/2" Dia., 11/16" HEX, 11ga, S.L.	10D0148	03	
30	2		37" Roller, 2-1/2" Dia., 11/16" HEX, 11ga, S.L.	10D0148	04	
31	2		44-1/2" Roller, 2-1/2" Dia., 11/16" HEX, 11ga, S.L.	10D0148	05	
32	2		50" Roller, 2-1/2" Dia., 11/16" HEX, 11ga, S.L.	10D0148	06	
33	2		54" Roller, 2-1/2" Dia., 11/16" HEX, 11ga, S.L.	10D0150	12	
34	2		58" Roller, 2-1/2" Dia., 11/16" HEX, 11ga, S.L.	10D0148	07	
35	28		84" Roller, 2-1/2" Dia., 11/16" HEX, 11ga, S.L.	10D0150	18	
36	6		Center Pivot Conv. (84") Transition Weldment Left Hand	38C0100	00	
37	6		Center Pivot Conv. (84") Transition Weldment Right Hand	38C0101	00	
38	6		5-1/2" Roller, 2-1/2" Dia., 11/16" HEX, 11ga, L.O.	10D0020	19	
39	6		10" Roller, 2-1/2" Dia., 11/16" HEX, 11ga, L.O.	10D0020	20	
40	6		16" Roller, 2-1/2" Dia., 11/16" HEX, 11ga, L.O.	10D0020	21	
41	6		24" Roller, 2-1/2" Dia., 11/16" HEX, 11ga, L.O.	10D0020	07	

\* Please specify Quantity and/or Length for any bill-of-material items with an asterisks.

For gearmotor information refer to Page 8, as indicated in this material list, to identify the motor and gearbox data plate information needed to order exact replacement parts.

Some items on this parts list require "fill-in" or additional information to receive the needed part. Please be sure to provide all information requested on this list, or within this manual to assure that you do infact get exact replacement parts. Systec's Parts Department will assist you in obtaining the proper part information, or answering any questions by calling 1-800-578-1755.

Item	Qty.	Rec. Spare	Description	Part Number	Gr.	Order Qty.
50	1	1	Motor, Center Pivot Conveyor	500-1901	-00	
51	1	1	Center Pivot Conv. Driveshaft X 11-1/2"	38B0021	00	
52	1	1	Keystock 5/16" X 6" L.	845-3600	-00	
53	1	1	Keystock 5/16" X 2-1/4" L.	845-3600	-00	
54	1	1	Bearing 2-Bolt Flange 1-3/8" Bore W/ Setscrews	580-2030	-00	
55	1	1	Wheel 8" O.D. X 2-1/4" Hub 1-3/8" Keyed Bore	985-1300	-00	
56	5	2	Caster 5" Dia., 2" Face 6-1/2" OAH Duralast	985-0100	-00	
57	1	1	Bearing 2-Bolt Flange 1-3/8" Bore W/ Setscrews	580-2030	-00	
58	1		Center Pivot Conv. Center Pivot Shaft X 4-3/8" L.	38B0010	00	

This Maintenance Schedule is intended to cover all basic types of conveyor and the related devices and components. Although your system may not have all the parts listed below this schedule should help in identifying those components or parts that may require service or inspection that may otherwise be neglected. Should you need assistance in identifying the location of some of these components, contact **SYSTEC's** Customer Service Department at **1-800-578-1755**.

ITEM	INSPECTION OR SERVICE REQUIRED	HOURS IN SERVICE				
		500	1,000	2,500	5,000	10,000
<b>Gearmotor</b>	Clean, Check for Noise, Leaks, and Mounting	X				
	Check Oil Level			X		
	Change Oil					X
<b>Bearings</b>	Check Roller Bearings for Noise				X	
	Check Pillow Block (PB) and Flange Block (FB) bearings for Noise, Mounting, and *Lubrication	X				
<b>Belt</b>	Check for Belt Ware, Tracking and Tension		X			
<b>Chains</b>	Check Tension, Wear, Lube and Adjustment	X				
<b>Wire Cables</b>	Check Tension, Wear, and Adjustment	X				
<b>Springs</b>	Check Tension, Wear, and Adjustment	X				
<b>Sprockets</b>	Check Alignment, Wear and Mounting	X				
<b>Pulleys</b>	Check Alignment, Wear and Mounting	X				
<b>UHMW Blocks and Pads</b>	Check for Wear and Fit			X		
<b>Cams and Rollers</b>	Check for Wear and Alignment	X				
<b>Transfer Rails</b>	Clean with Degreaser	X				
<b>Photoeyes</b>	Clean with Soft Cloth or Dry High Pressure Air	X				
<b>Limitswitches</b>	Clean debris and Check Arm for Free Movement	X				
<b>Proximity Switch</b>	Clean Debris and Check for Proper Operation	X				
<b>Pendant Switch</b>	Check for Proper Operation			X		
<b>Lockout Switch</b>	Check for Proper Operation and Safety Labels			X		
<b>Foot Switch</b>	Check for Proper Operation			X		
<b>Foot Valve</b>	Check for Proper Operation			X		
<b>Strobe Light</b>	Check for Proper Operation			X		
<b>Sound Alert</b>	Check for Proper Operation			X		
<b>Motion Detector</b>	Check for Proper Operation			X		
<b>Load Measuring Device</b>	Check for Proper Operation			X		
<b>Air Filter/Regulator</b>	Check and Clean Trap and Adjust Pressure	X				
<b>Solenoid Valve</b>	Check for Air Leaks			X		
<b>Air Mount (air bag)</b>	Check for Air Leaks	X				
<b>Air Supply Line</b>	Check for Air Leaks	X				

\* Check bearing type for regreasable (zerk) fitting. Some bearings may be "sealed-for-life" and do not require regreasing.

