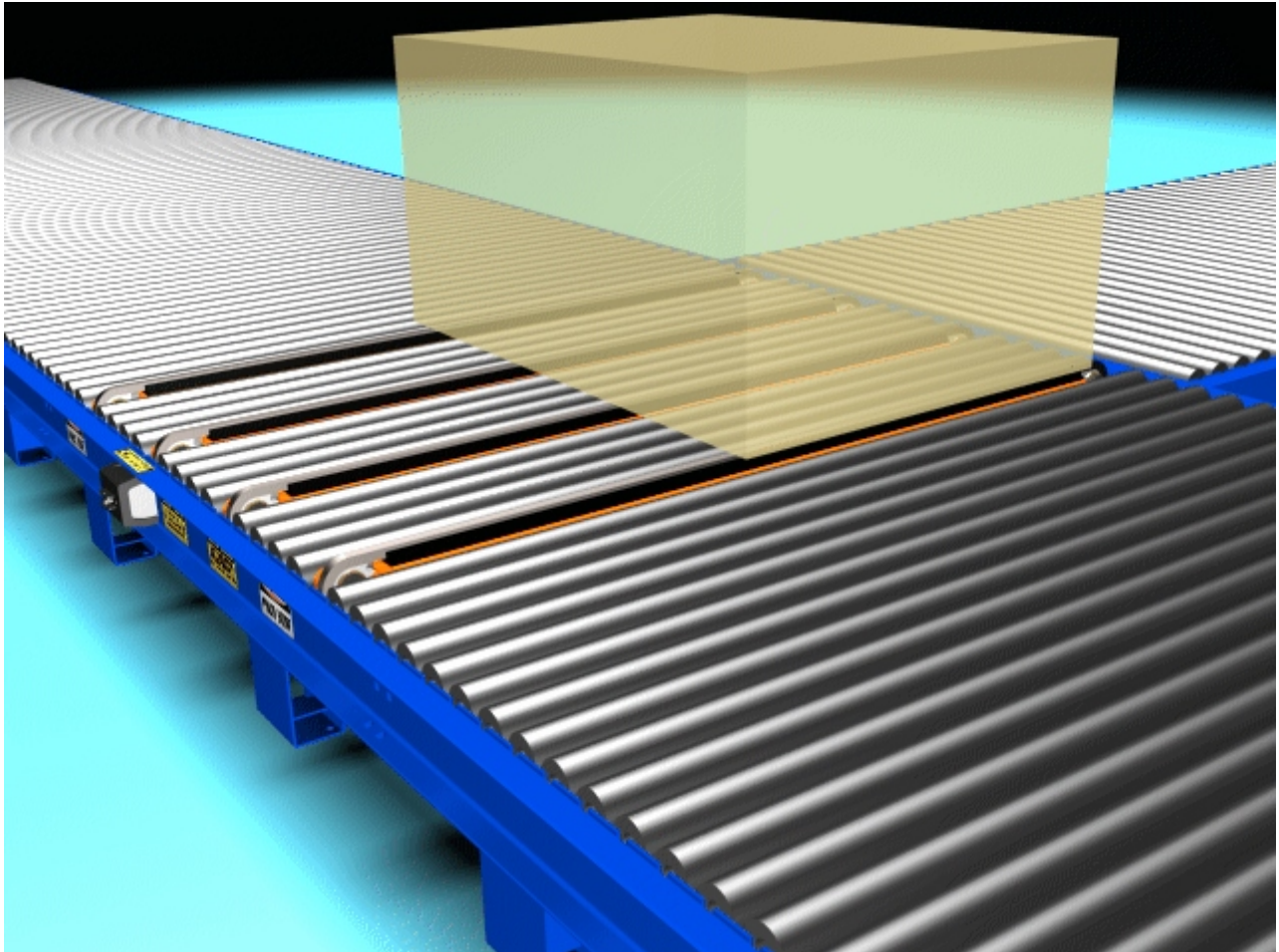


BELT TRANSFER DEVICE



SERVICE AND MAINTENANCE MANUAL

TABLE OF CONTENTS

DESCRIPTION	PAGE NO.
Belt Transfer Device and Lift Assembly	2
Safety	3
Service and Parts	5
Parts Descriptions and Part Numbers	8
Maintenance Schedule	9

LIST OF ILLUSTRATIONS	PAGE NO.
A BTD/Lift Assembly at RDC Discharge	2
B BTD/Lift Assembly Safety Labels	3
C Lockout Switch for Safety	4

LIST OF ASSEMBLY DRAWINGS	PAGE NO.
1 BTD Top View	6
2 BTD SideView	6
3 BTD End View	6
4 BTD Idler Cut Away	6
5 BTD, Conveyor, and Lift Assembly	7
6 Conveyor and Lift Assembly	7

When ordering parts, please call, fax or e-mail Systec at the address and/or the numbers shown below.

SYSTEC Conveyors Parts Department
10010 Conveyor Drive
Indianapolis, IN 46235

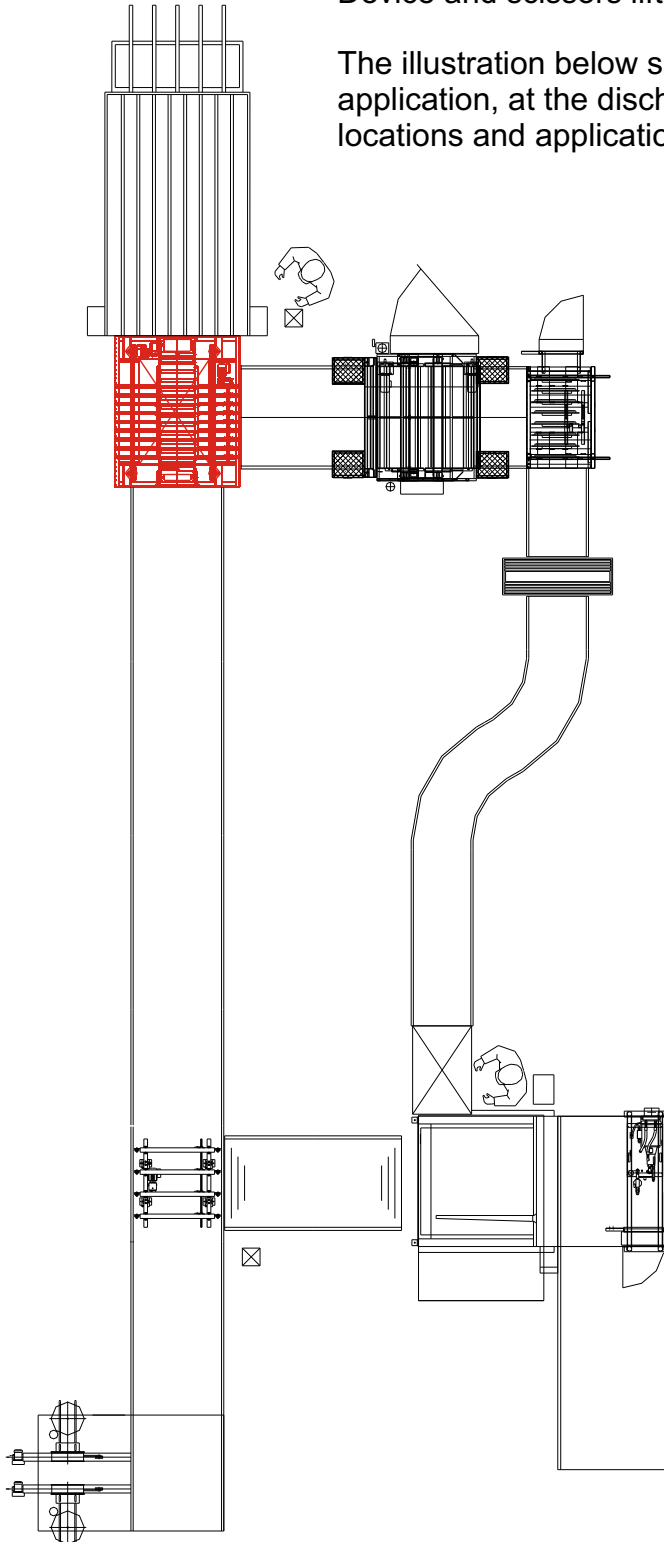
Tel 317.890.9230
1.800.578.1755
Fax 317.890.9232

On The Net @ <http://www.systecconveyors.com>
e-mail: info@systecconveyors.com

BELT TRANSFER DEVICE AND LIFT ASSEMBLY

The information within this manual covers **SYSTEC's** Belt Transfer Device and scissors lift assembly. In this manual, the Belt Transfer Device and scissors lift will be referred to as BTD/Lift Assembly.

The illustration below shows the BTD/Lift Assembly in a typical application, at the discharge end of a die cut stacker. Other locations and applications can be applied to this type device.



BELT TRANSFER DEVICE/LIFT ASSEMBLY AT RDC STACKER DISCHARGE.

With the BTD/Lift Assembly, loads can be discharged directly onto the floor conveyor, or diverted to the right or left via the BTD. With a BTD diverted load, the lift assembly can be in an elevated position to match that of a bundle handling conveyor for processing through special operation equipment, such as bundle breakers or shrink wrappers.

ILLUSTRATION A

EQUIPMENT SAFETY

The Where safety is concerned < conveyor equipment information within this manual covers **SYSTEC's** Belt Transfer Device and scissors lift assembly.

Label application typical of one side. Additional labels required on all exposed and visible areas of the lift, conveyor, and device.

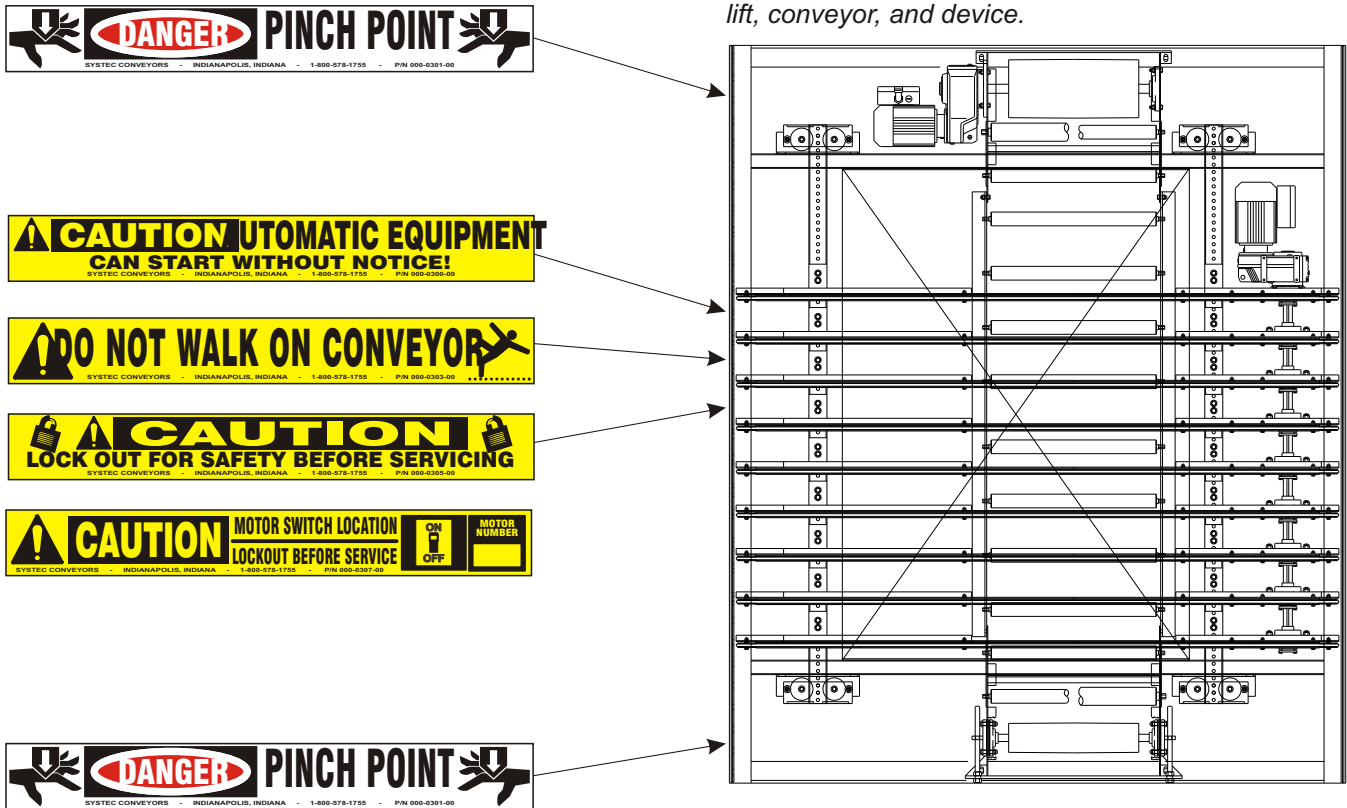


ILLUSTRATION B

ILLUSTRATION C

Notes:

Exact location of Motor Switch labels are determined by the mounting location at the time of installation.

If some labels are covered at time of installation by the infeed or discharge conveyors, be sure additional warning labels are installed in appropriate locations as required.

EQUIPMENT SAFETY (continued)

Lockout is a very important part of your Maintenance and Service Department procedure. Lockout Switches should be provided, like shown in illustration D, for each drive motor provided on each conveyor line and device.

LOCKOUT SWITCH FOR SAFETY



ILLUSTRATION C

Note: Only authorized and trained personnel should perform service and maintenance on any conveyor equipment and controls..

BELT TRANSFER DEVICE AND LIFT ASSEMBLY SERVICE AND PARTS

The illustrations within this section are primarily related to the Belt Transfer Device and Powered Conveyor that is mounted to the lift assembly. For more specific parts related to the lift assembly, you will need to refer to the Autoquip, Series 35, Installation, Operation, and Service Manual provided with this manual.

The components identified within this BTD/Lift Assembly manual focus on the “wearable parts” of the device and conveyor. Should you need components other than those identified in this document, please contact **SYSTEC's** Service Department. Refer to this manual, the page on which the part is shown, and discuss what particular part is needed. The parts page can also be copied and faxed with notes indicating what part(s) are required.

When ordering parts, be sure to refer to the parts pages and use the full description and part numbers when ordering. Parts orders can be received by mail, phone, fax, and/or e-mail;

Systec Conveyors
10010 Conveyor Drive
Indianapolis, IN 46235

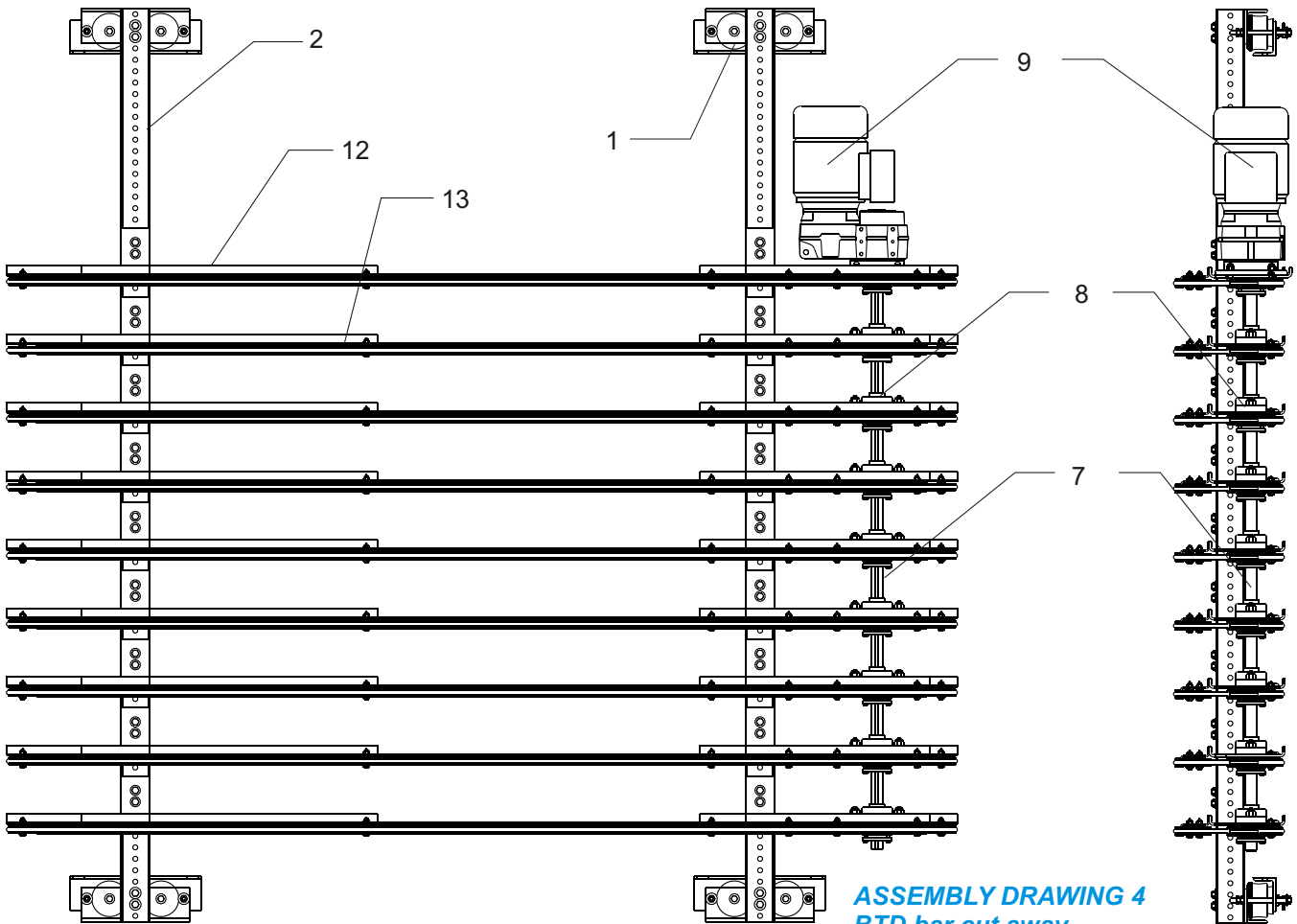
Tel: 317.890.9230
Toll Free: 800.578.1755
Fax: 317.890.9232
E-mail: info@systecconveyors.com
bskirvin@systecconveyors.com

BELT TRANSFER DEVICE AND LIFT ASSEMBLY SERVICE AND PARTS (continued)

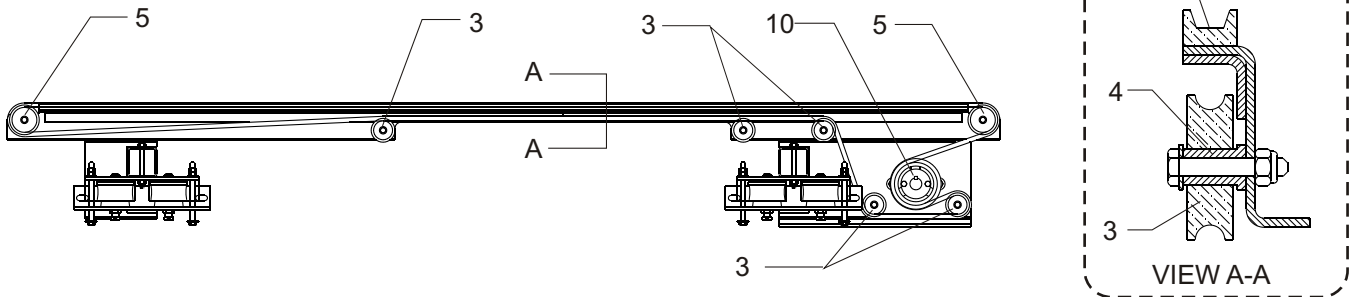
ASSEMBLY DRAWING 1 Top View BTD

Notes:
BTD bars can be relocated as required to match load being transferred..

ASSEMBLY DRAWING 2 Side View BTD



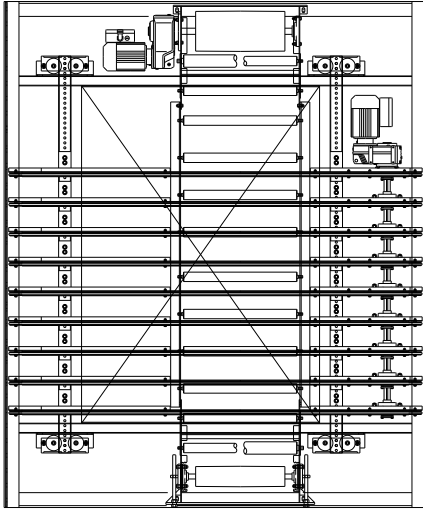
ASSEMBLY DRAWING 3 End View BTD



BELT TRANSFER DEVICE AND LIFT ASSEMBLY SERVICE AND PARTS (continued)

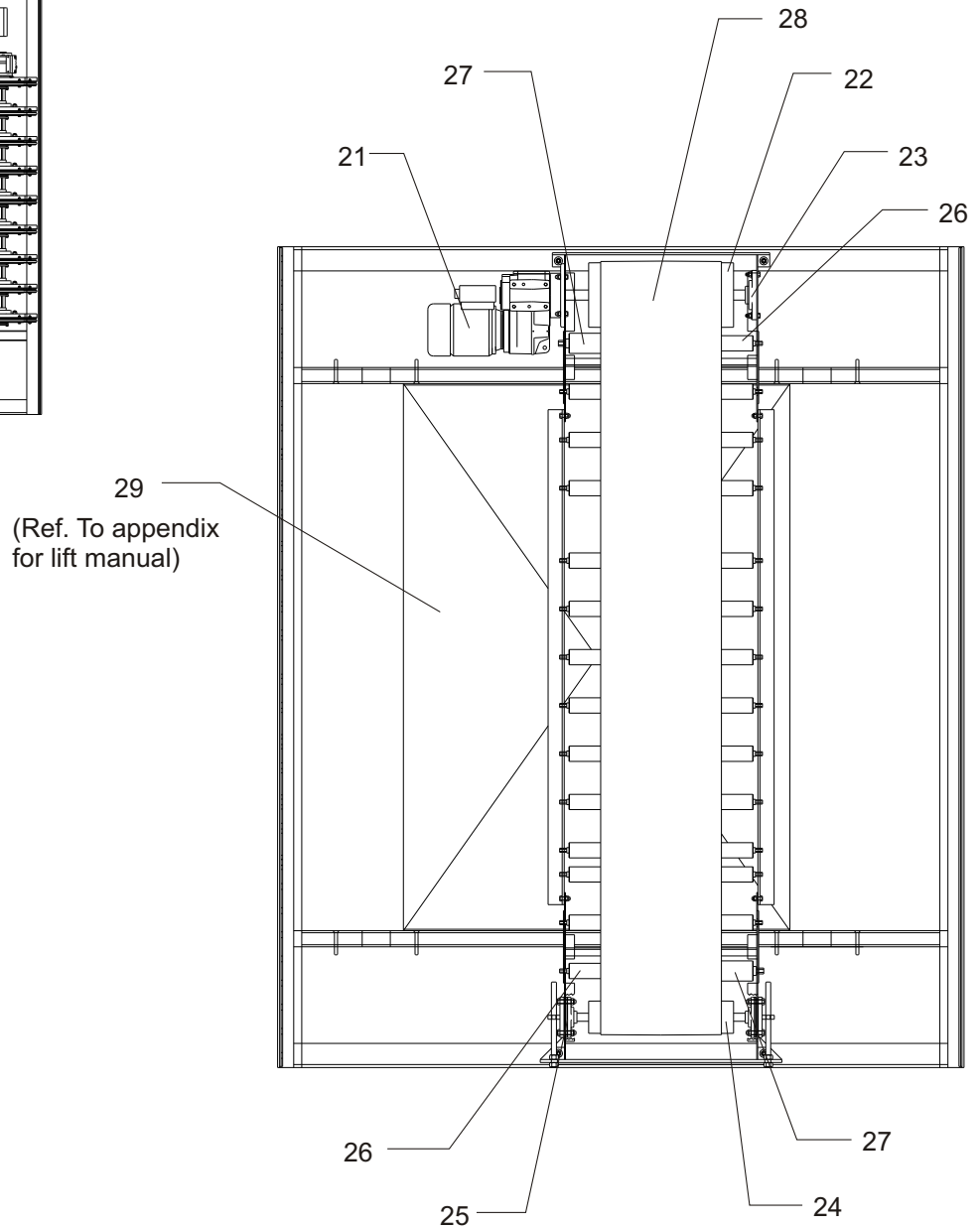
ASSEMBLY DRAWING 5

Notes:
BTD, Conveyor, and Lift as assembled.



ASSEMBLY DRAWING 6

Conveyor components as mounted on Lift Assembly.



Some items on this parts list require "fill-in" or additional information to receive the needed part. Please be sure to provide all information requested on this list, or within this manual to assure that you do in fact get exact replacement parts. **SYSTEC's** Parts Department will assist you in obtaining the proper part information, or answer any questions by calling 1-800-578-1755.

Item	Qty.	Rec. Spare	Description	Part Number	Gr.	Order Qty.
BELT TRANSFER DEVICE						
1	8	2	AIRMOUNT, 1M1A FIRESTONE	630-1000	00	
2	2	0	TELSPAR TUBE, 2 1/2" X 2 1/2" X 12GA W/HOLES	493-0054	00	
3	45	6	PULLEY, 2"OD X 1/2"ID X 5/8"W	550-5055	12	
4	18	2	PULLEY, 2 1/2"OD X 1/2"ID X 5/8"W	550-5056	12	
5	9	2	V-BELT GUIDE, 1/2" X 3/4" X 78"	580-6002	38	
6	49	6	IDLER SPACER BUSHING X 7/8"	3201647110		
7	1	0	BTD DRIVE SHAFT, 1" X 56", 1/4"FULL KEY	3201647114		
8	8	2	BEARING, FB, 2-BOLT, 1" BORE W/SETSCREW	580-2010	00	
9	1	1	GEARMOTOR, SKO282NBAF80S4, 3/4HP	501-2211	00	
10	9	2	SHEAVE, 4 1/4"OD X 1"ID, "H" BUSHING	550-5080	01	
11	9	2	BELT, URETHANE, 90 DUROMETER, 8MM X 175"	580-8005	00	
12	1	0	BTD DRIVE CHANNEL WELDMENT X 83 3/8"	3201647108		
13	8	0	BTD IDLER CHANNEL WELDMENT X 83 3/8"	3201647109		
LIFT ASSEMBLY						
21	1	1	GEARMOTOR, SK1382NB/AF-80L4, 1HP	501-0610	00	
22	1	1	DRIVE PULLEY, 8" CROWNED X 18", 1 3/8" SHAFT	550-6085	00	
23	1	1	BEARING, FB, 2-BOLT, 1 3/8" BORE	580-2030	00	
24	1	1	TAKEUP PULLEY, 4" CROWNED X 18", 1" SHAFT	550-6110	00	
25	2	1	BEARING, FB, 2-BOLT, 1" BORE	580-2010	00	
26	2	1	24" ROLLER, 1.9" DIAMETER, 7/16"HEX, 16GAUGE, HI-CAPACITY	3901647056		
27	10	1	24" ROLLER, 2.5" DIAMETER, 11/16"HEX, 11GAUGE, HI-CAPACITY	10D0190	02	
28	1	1	BELT, 15" X 19'	570-0519	00	
29	1	0	SCISSORS LIFT, SERIES 35, 36S40 EXW	001-0382	00	
(refer to appendix for lift manual and information)						

* Please specify Quantity and/or Length for any bill-of-material items with an asterisks.

* For gearmotor orders, provide all S.O. information from the motor and gearbox data plates found on gearmotor, item 36, on page 8 of this manual.

This Maintenance Schedule is intended to cover all basic types of conveyor and the related devices and components. Although your system may not have all the parts listed below this schedule should help in identifying those components or parts that may require service or inspection that may otherwise be neglected. Should you need assistance in identifying the location of some of these components, contact **SYSTEC's** Customer Service Department at **1-800-578-1755**.

ITEM	INSPECTION OR SERVICE REQUIRED	500	1,000	2,500	5,000	10,000
Gearmotor	Clean, Check for Noise, Leaks, and Mounting	X				
	Check Oil Level			X		
	Change Oil					X
Bearings	Check Roller Bearings for Noise				X	
	Check Pillow Block (PB) and Flange Block (FB) bearings for Noise, Mounting, and *Lubrication	X				
Belt	Check for Belt Wear, Tracking and Tension		X			
Chains	Check Tension, Wear, Lube and Adjustment	X				
Wire Cables	Check Tension, Wear, and Adjustment	X				
Springs	Check Tension, Wear, and Adjustment	X				
Sprockets	Check Alignment, Wear and Mounting	X				
Pulleys	Check Alignment, Wear and Mounting	X				
UHMW Blocks and Pads	Check for Wear and Fit			X		
Cams and Rollers	Check for Wear and Alignment	X				
Transfer Rails	Clean with Degreaser	X				
Photoeyes	Clean with Soft Cloth or Dry High Pressure Air	X				
Limitswitches	Clean debris and Check Arm for Free Movement	X				
Proximity Switch	Clean Debris and Check for Proper Operation	X				
Pendant Switch	Check for Proper Operation			X		
Lockout Switch	Check for Proper Operation and Safety Labels			X		
Foot Switch	Check for Proper Operation			X		
Foot Valve	Check for Proper Operation			X		
Strobe Light	Check for Proper Operation			X		
Sound Alert	Check for Proper Operation			X		
Motion Detector	Check for Proper Operation			X		
Load Measuring Device	Check for Proper Operation			X		
Air Filter/Regulator	Check and Clean Trap and Adjust Pressure	X				
Solenoid Valve	Check for Air Leaks			X		
Air Mount (air bag)	Check for Air Leaks	X				
Air Supply Line	Check for Air Leaks	X				

* Check bearing type for regreasable (zerk) fitting. Some bearings may be "sealed-for-life" and do not require regreasing.